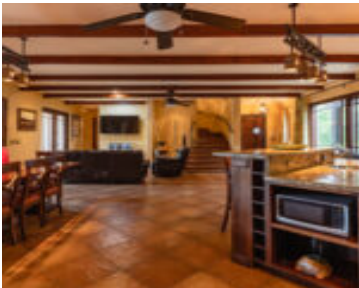
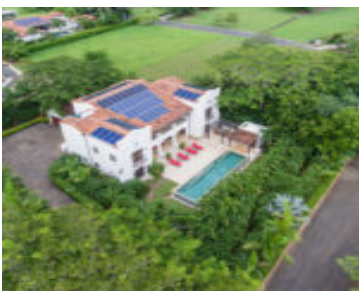


CASA ORQUIDEA
<https://rpmrealestatecr.com>



- 6 beds
- 4.5 baths
- House
- 6000 sq ft

Set in the exclusive Las Golondrinas beachfront community at Hacienda Pinilla, Beach Resort and Residential Community, this exquisite custom home provides direct access to world-class beaches, surfing, championship golf, tennis, sport-fishing and equestrian facilities. The 5-Star JW Marriott Guanacaste Resort and Spa is 1K from the residence. The home is 15 minutes from the vibrant town of Tamarindo with all of its shops, fine dining and nightlife, while the International Airport in Liberia and several National Parks and volcanoes are 1 hour away. The lovely residence is set within a beautifully landscaped 2014m2 (1/2 acre) site, complemented by mature specimen trees and lush landscaping. The driveway is inlaid with intricate patterns of native slate and antique brick. Taking full advantage of the home's direct southern exposure, the infinity edge salt-filtered swimming pool serves as the central water feature in true Spanish architectural tradition. It blends with the home's main exterior terrace and a covered Pool Pavilion, with bathroom, shower and outdoor grill, to form an extensive outdoor Social Area for entertaining friends and family. An ample Garage and Carport provide both shelter and storage for vehicles and equipment. Featured in several international design publications, "Casa Orquidea" was designed by California architect Miguel Podolsky and custom built engineer Karl Gronemeyer. The delightful 6-bedroom/4.5-bath residence offers two Master Suites and nearly 6,000 sq. ft. of exquisite Spanish Colonial architecture and fine finishes. The open floor plan with a traditional aesthetic showcases old world craftsmanship: and timeless design elements, resulting in an innovative design that is well thought out, practical and imaginative. Upon entering, one is greeted by a Great Room with a Dining Room Area, which flows seamlessly from the professionally equipped Kitchen and Breakfast Bar. These spaces feature rich custom cabinetry, granite countertops, ample pantry, imported hardware and subtle accents. The poolside Master Suite opens to the outdoor terrace, with an inlaid brick ceiling and shaded lounge areas while the other two guest suites share a bathroom with traditional Spanish detailing. A staircase leads to the 2nd floor Entertainment Room, with soaring 8-meter (25 ft.) vaulted hardwood ceiling, suspended by a massive center beam and stunning tropical hardwood floors throughout. The area is bathed in natural light through large windows and includes a Wine Bar, Home Theater and Lounge/Piano Area. Handcrafted wooden doors open to the covered balcony with "caña brava" ceilings and large hammocks for relaxing afternoons. The large second floor Master Suite has high ceilings and elegant ambiance with rustic accents. It has direct access to the covered terrace and is flanked by a spacious Bath with double showers, and adjoining walk-in closet. Additionally two additional Guest Suites flank the Entertainment Room and share a common Bathroom. The home has 16 Solar Panels, a Security system, new split system air conditioning systems and built in surround sound audio. The pool pump stations and utilities room are encased in an outside service compartment. For more information or to arrange a showing, please contact info@RPMRealEstateCR.com



RPM Real Estate



Basics

Price: \$1,850,000

Bedrooms: 6 beds

Location: [Pinilla](#)

Area, sq ft: 6000 sq ft

Type: House

Bathrooms: 4.5 baths

Lot Size, Sq m: 2014 m²

